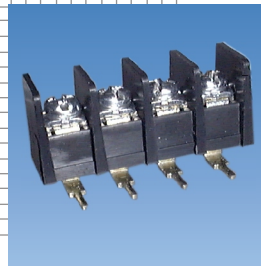


**PLUGGABLE
TERMINAL BLOCK**



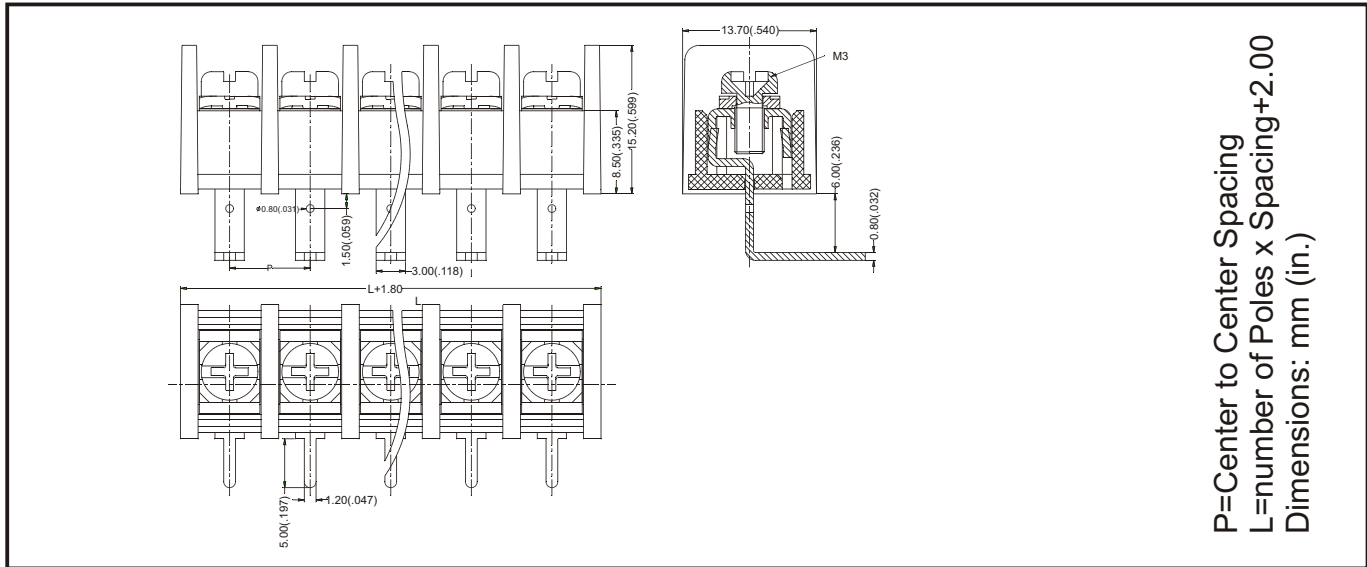
TYPE BTB555



SPECIFICATIONS

WIRE ENTRANCE:Vertical to PCB	MAX. TORQUE:7 lb-in.
CENTER SPACING:8.255mm / 0.325 in	PRESSURE PLATE:Steel, Ni Plated
WIRE RANGE:12--26 AWG	SCREW:M3, Steel, Ni Plated
ELECTRICAL RATING:300V, 20A	TERMINAL:.....Brass, Tin Plated
BREAKDOWN VOLTAGE:4,000V	TEMPERATURE:
MOLDING:Thermoplastic, UI94	OPERATING:-40°C to +120°C
V-0, Self Extinguishing	-40°F to + 248°F
	MAX. SOLDERING:260°C , +500°F
	for 5 seconds

MECHANICAL DIMENSIONS



ORDERING INFORMATION

BTB555 — **1** **1** — — —

Style 00 to 99	Poles 02 to 30	Color 0=Light Grey 1=Black 2=Blue 3=Green 4=Dark Grey	Options*
--------------------------	--------------------------	---	-----------------

Options*: M1~M9, For Customer Modification (Please provide sketch).
If more than one option is required, please separate each option with a dash (-).