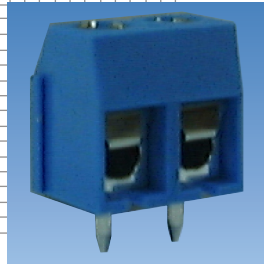


**EURO
TERMINAL BLOCK**



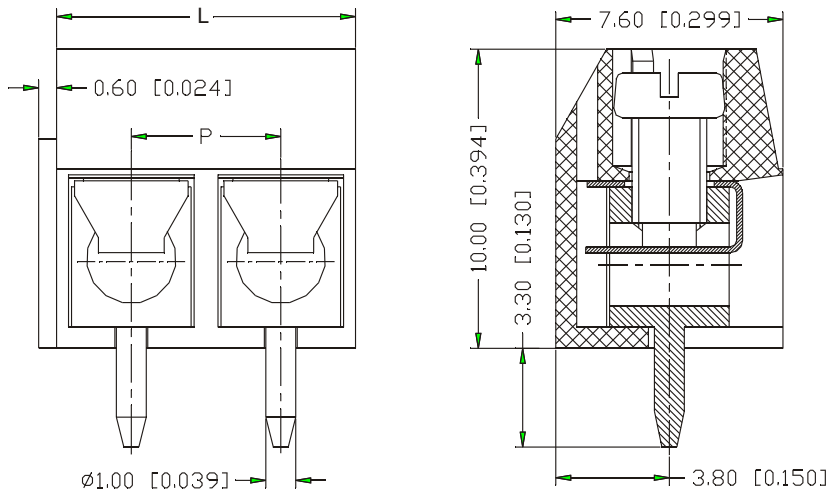
TYPE JTB450



SPECIFICATIONS

WIRE ENTRANCE:Parallel to PCB	MAX.TORQUE:3 lb-in.
CENTER SPACING:5.00mm / 0.197 in.	WIRE PROTECTOR:Phosphor Bronze,Ni Plated
WIRE RANGE:14--22 AWG	SCREW:.....M2.5,Steel,ZincPlated
ELECTRICAL RATING:300V, 10A	TERMINAL BODY:Brass,Tin Plated
BREAKDOWN VOLTAGE:4,000V	OPERATING:-40°C to +105°C
MOLDING:PA66, UL94, V-0	MAX. SOLDERING:260°C , +500°F
Self Extinguishing	for 5 seconds

MECHANICAL DIMENSIONS



P = Center to Center Spacing
 Length of Connector (L)
 L = number of Poles X Center Spacing
 Dimensions: mm (in.)

ORDERING INFORMATION

JTB450 — 1 2 — — — —

Styles 00 to 99	Spacing 1=5.00mm 2=5.08mm	Poles 02 to 18	Color 0=Light Grey 1=Black 2=Blue 3=Green 4=Dark Grey	Options*
---------------------------	----------------------------------------	--------------------------	-----------------------------------------------------------------------	-----------------

Options*: M1~M9, For Customer Modification (Please provide sketch).
 If more than one option is required, please separate each option with a dash (-).