

TECHNICAL DATA

WIRE ENTRANCE Parallel or Vertical to PCB
 PITCH .
 5.08mm / 0.200in.
 MAX. TORQUE 5lb-in.

MATERIALS

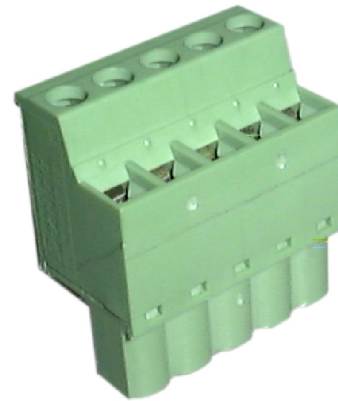
BODY Polyamide, UL94, V-0
 Self Extinguishing
 SCREW M2.5, Steel, Zinc Plated
 WIRE PROTECTOR Bronze, Ni Plated
 WIRE CAGE Brass, Ni Plated

TEMPERATURE

OPERATING -40°C to +105°C
 -40°F to + 221°F
 MAX. SOLDERING 260°C, +500°F
 for 5 seconds

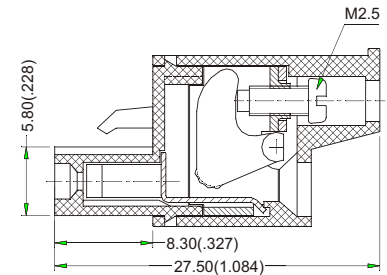
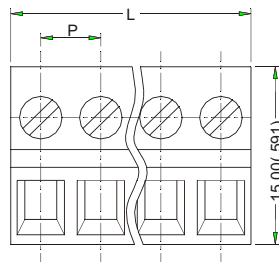
ELECTRICAL DATA

ELECTRICAL RATING 300V, 10A
 BREAKDOWN VOLTAGE 4,000V



Style 07

Poles	L		Poles	L	
	P=5.00mm	P=5.08mm		P=3.50mm	P=3.81mm
02	10.00	10.16	18	90.00	91.44
03	15.00	15.24	19	95.00	96.52
04	20.00	20.32	20	100.00	101.60
05	25.00	25.40	21	105.00	106.68
06	30.00	30.48	22	110.00	111.76
07	35.00	35.56	23	115.00	116.84
08	40.00	40.64	24	120.00	121.92
09	45.00	45.72			
10	50.00	50.80			
11	55.00	55.88			
12	60.00	60.96			
13	65.00	66.04			
14	70.00	71.12			
15	75.00	76.20			
16	80.00	81.28			
17	85.00	86.36			



Style 07

* Dimensions in millimeters

P=Center to Center Spacing
 Dimensions: mm (in.)

ORDERING INFORMATION

Type	Style	Pitch	Poles	Color	Options*
PTB750B	— 07 —	— 1 —	02 04	— 0 —	M 00
	00 to 99	1=5.00mm 2=5.08mm	02 to 24	0=Light Grey 1=Black 2=Blue 3=Green 4=Dark Grey	

If more than one option is required, please separate each option with a dash(-).