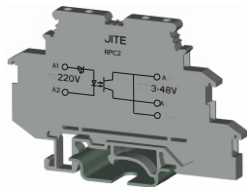
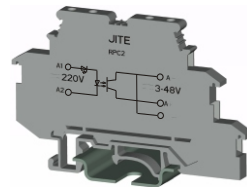


Ray Photoelectric Coupling Terminal Blocks



RPC4 110DC-48DC-20mA



RPC2 220DC-48DC-100mA

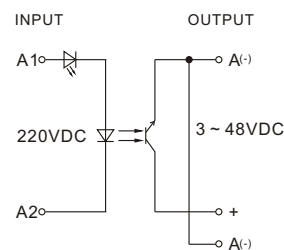
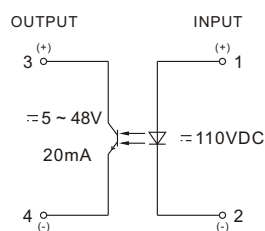
Dimensions

width/thick/height(JNS35/7.5)

66 / 6.2 / 66

80 / 6.2 / 56

Electric Drawing



Technical Data

Input Voltage	110VDC±10%	220VDC±20%
Input Current	≤3mA	≤2.5mA
Output Voltage	5 ~ 48VDC	3 ~ 48VDC
Max Load Current	20mA	100mA
Min Load Current	50μA	10μA
Max Surge Rate 1:2	500Hz	300Hz
Max Load Step-down	≤1V	≤1V

Insulation Data

Electrical Rating	300V	300V
Rated Surge Voltage	2.5kV	2.5kV
Surge Voltage Category	III	III
Insulation Material Group	2	2
Environment Temperature	-25°C ~ +50°C	-20°C ~ +60°C
Lead Section	0.5 ~ 2.5mm ²	0.2 ~ 2.5mm ²

Accessories

	Type	Type
Terminal Block Board	AED 4	-
Mounting Rail	JNS 35/7.5 JNS 35/15 JNS 32	JNS 35/7.5 JNS 35/15 JNS 32