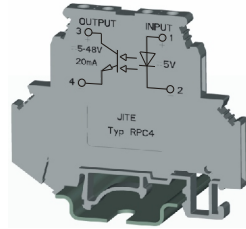
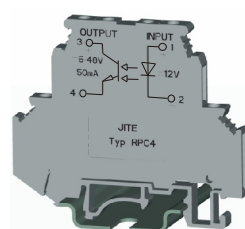


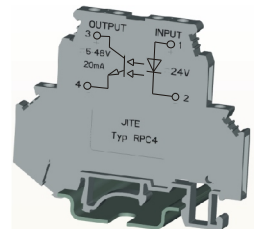
Ray Photoelectric Coupling Terminal Blocks



RPC4 5DC-48DC-20mA



RPC4 12DC-48DC-50mA



RPC4 24DC-48DC-20mA

Dimensions

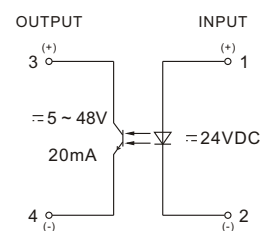
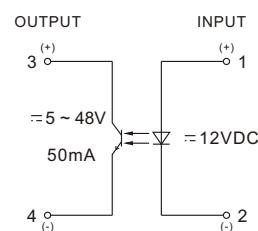
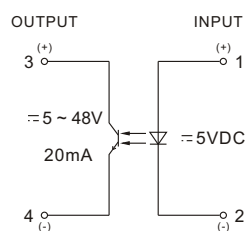
width/thick/height(JNS35/7.5)

66 / 6.2 / 66

66 / 6.2 / 66

66 / 6.2 / 66

Electric Drawing



Technical Data

Input Voltage	5VDC±10%	12VDC±10%	24VDC±10%
Input Current	≤10mA	≤7mA	≤5mA
Output Voltage	5 ~ 48VDC	5 ~ 48VDC	5 ~ 48VDC
Max Load Current	20mA	50mA	20mA
Min Load Current	50μA	50μA	50μA
Max Surge Rate 1:2	500Hz	500Hz	500Hz
Max Load Step-down	≤1V	≤1.4V	≤1V

Insulation Data

Electrical Rating	300V	300V	300V
Rated Surge Voltage	2.5kV	2.5kV	2.5kV
Surge Voltage Category	III	III	III
Insulation Material Group	2	2	2
Environment Temperature	-25°C ~ +50°C	-25°C ~ +50°C	-25°C ~ +50°C
Lead Section	0.5 ~ 2.5mm ²	0.5 ~ 2.5mm ²	0.5 ~ 2.5mm ²

Accessories

	Type	Type	Type
Terminal Block Board	AED 4	AED 4	AED 4
Mounting Rail	JNS 35/7.5 JNS 35/15 JNS 32	JNS 35/7.5 JNS 35/15 JNS 32	JNS 35/7.5 JNS 35/15 JNS 32