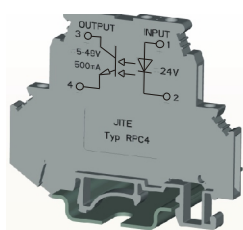
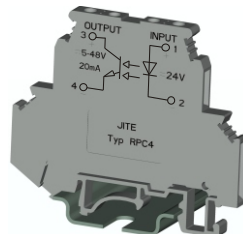


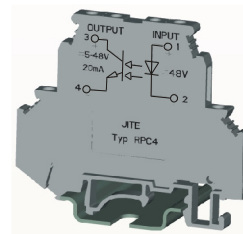
# Ray Photoelectric Coupling Terminal Blocks



RPC4 24DC-48DC-300mA



RPC4 24AC/DC-48DC-20mA



RPC4 48DC-48DC-20mA

## Dimensions

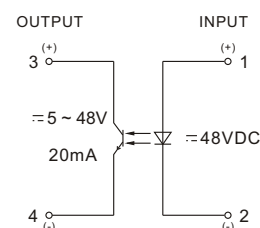
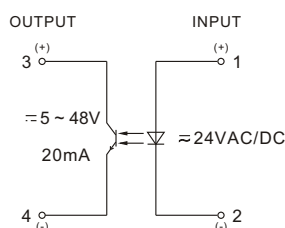
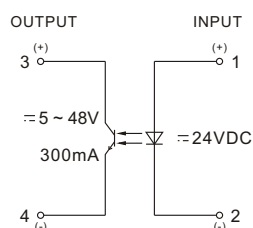
width/thick/height(JNS35/7.5)

## Electric Drawing

66 / 6.2 / 66

66 / 6.2 / 66

66 / 6.2 / 66



## Technical Data

### Input Voltage

24VDC±10%

24VAC/DC±10%

48VDC±10%

### Input Current

≤5mA

7.3mA AC / 7mA DC

≤4mA

### Output Voltage

5 ~ 48VDC

5 ~ 48VDC

5 ~ 48VDC

### Max Load Current

300mA

20mA

20mA

### Min Load Current

50μA

50μA

50μA

### Max Surge Rate 1:2

500Hz

AC: 5Hz DC:20Hz

500Hz

### Max Load Step-down

≤1.5V

≤1V

≤1V

## Insulation Data

### Electrical Rating

300V

300V

300V

### Rated Surge Voltage

2.5kV

2.5kV

2.5kV

### Surge Voltage Category

III

III

III

### Insulation Material Group

2

2

2

### Environment Temperature

-25°C ~ +50°C

-25°C ~ +50°C

-25°C ~ +50°C

### Lead Section

0.5 ~ 2.5mm<sup>2</sup>

0.5 ~ 2.5mm<sup>2</sup>

0.5 ~ 2.5mm<sup>2</sup>

## Accessories

### Terminal Block Board

AED 4

AED 4

AED 4

### Mounting Rail

JNS 35/7.5  
JNS 35/15  
JNS 32

JNS 35/7.5  
JNS 35/15  
JNS 32

JNS 35/7.5  
JNS 35/15  
JNS 32